

GW MODEL R Type LTH LONG THROW HORIZONTAL OPEN SPRINKLER

INSTALLATION

It is essential that the sprinkler is always installed so that the axis and deflector are truly horizontal (Fig. 4 & 5), in order to ensure the correct spray distribution.

This should be checked by using a spirit level with a 15 N/B temporary measuring pipe, hand tightened in to the sprinkler outlet fitting (Fig. 3) and then across the yoke arms after installation of the sprinkler.

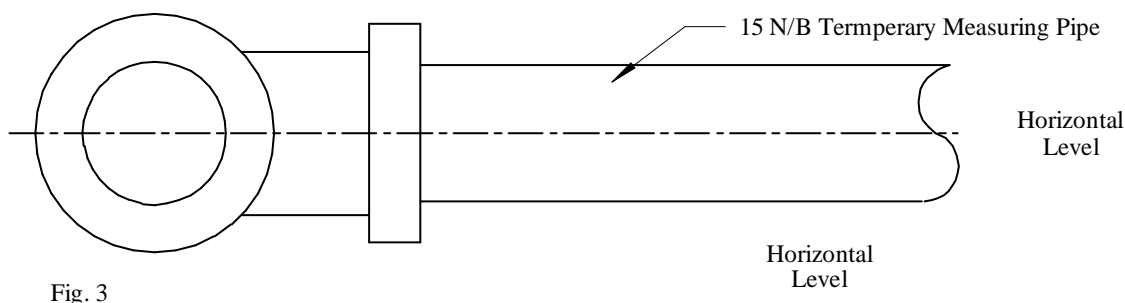


Fig. 3

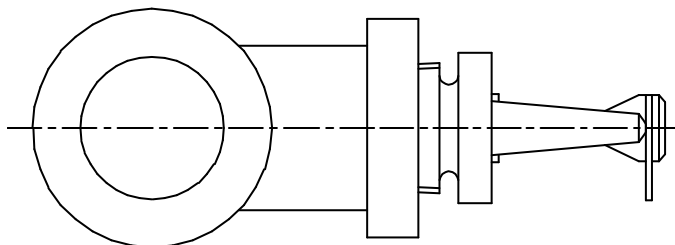


Fig 4

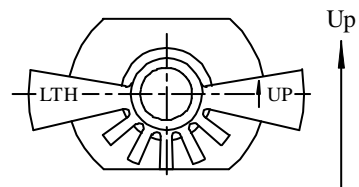


Fig 5

WARNING

Distribution depends on deflector geometry.

Should the deflector or yoke be bent or damaged, the sprinkler should be replaced.

Sprinklers that have been installed **must not** be re-installed.