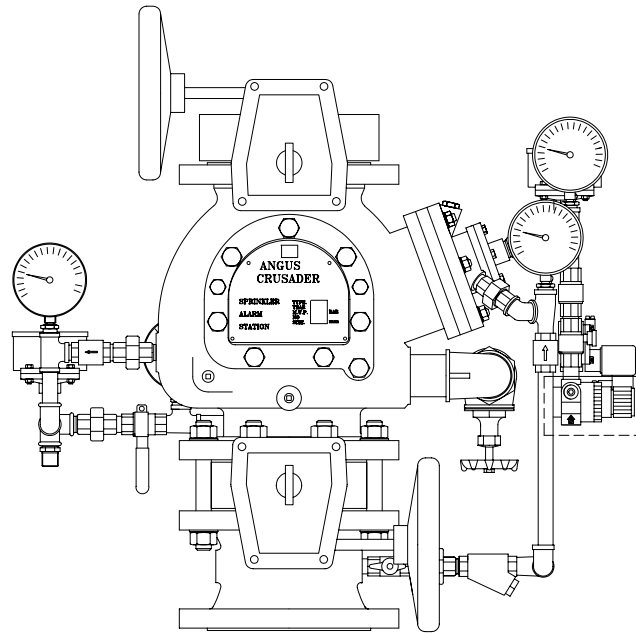


GW DELUGE VALVE STATION

MK III CAST IRON PNEUMATIC (ELECTRIC)

GENERAL DESCRIPTION



General Description

The GW Mark III Deluge Valve Station comprises a Mk III Deluge Valve (LPC approved) sandwiched between butterfly isolation valves (to LPC rules), a spool piece normally flanged PN16 and all necessary trim, common key padlocks, pressure gauges and pressure switches to enable the valve to operate.

All stations are arranged for bottom entry, top exit, flanged PN16 and rated for supply pressures up to 16 bar.

Stations are supplied in three sizes, 100, 150 and 200mm nominal bore, and are supplied pressure tested with all trim fully assembled, crated for shipment.

Optional extras:

Water motor alarm gong

Glycerine filled pressure gauges

Single or double solenoid valves for releasing latching air pressure (Electro/Pneumatic operation)

Monitored (with microswitch) butterfly valves

Explosion proof pressure switches and solenoid valves

For valve options such as Aluminium Bronze body or ANSI flanges refer to the GW Mk III Deluge Valve data sheet.

The right is reserved to vary or modify any specifications without prior notice

GW SPRINKLER A/S

Kastanievej 15, DK 5620-Glamsbjerg, Denmark

TEL: +45 64722055 FAX: +45 64722255

Email: sales.dep@gwspinkler.com

Data sheet also available at www.gwspinkler.com

DATA SHEET No: **GW DV025 1001 A**

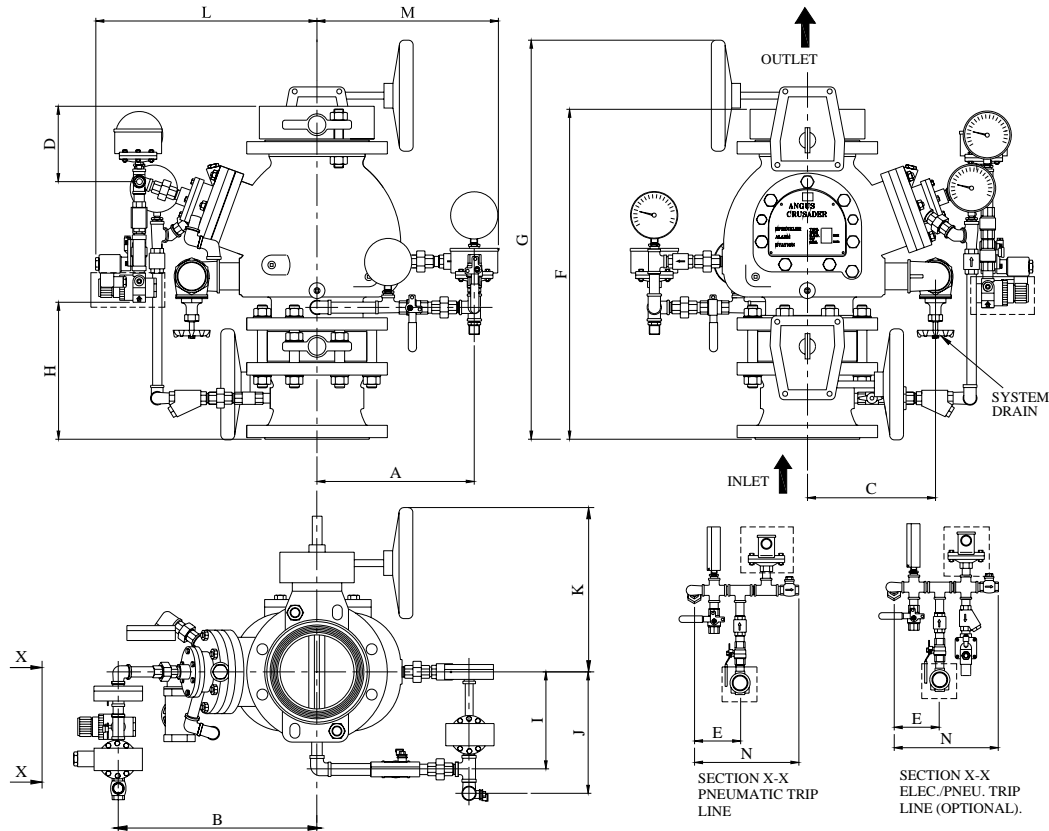
Data Sheet: Deluge Valve MK3 Pneumatic
General Description

Page: Page 1 of 3
Date: 15th June 2007

GW DELUGE VALVE STATION

MK III CAST IRON PNEUMATIC (ELECTRIC)

GENERAL DESCRIPTION



Size mm	A	B	C	D	E	F	G	H	I	J	K	L	M	N	Weight
100	325	380	270	55	130	600	710	265	145	180	240	440	370	300	135 kg
150	325	400	320	100	130	660	820	280	185	240	320	440	370	300	169 kg
200	375	440	365	175	130	750	910	295	215	270	349	480	420	300	252 kg

Standard trim:

Butterfly isolation valves top and bottom (lower valve located with a spool piece).

Water priming line to feed the large hydraulic diaphragm complete with strainer, lockable isolation valve, pressure gauge and non-return valve.

Bell line with lockable isolation valve, bell test line complete with lockable ball valve, drip union, pressure switch factory set to operate at 1 bar rising and a non return valve to stop water entering the valve body during the bell test, pressure gauge.

Drain valve, 2" globe.

Pneumatic line with pressure gauge, manual release via a lockable ball valve and facility for detector line connection.

The right is reserved to vary or modify any specifications without prior notice

GW SPRINKLER A/S

Kastanievej 15, DK 5620-Glamsbjerg, Denmark

TEL: +45 64722055 FAX: +45 64722255

Email: sales.dep@gwspinkler.com

Data sheet also available at www.gwspinkler.com

DATA SHEET No: **GW DV025 1001 A**

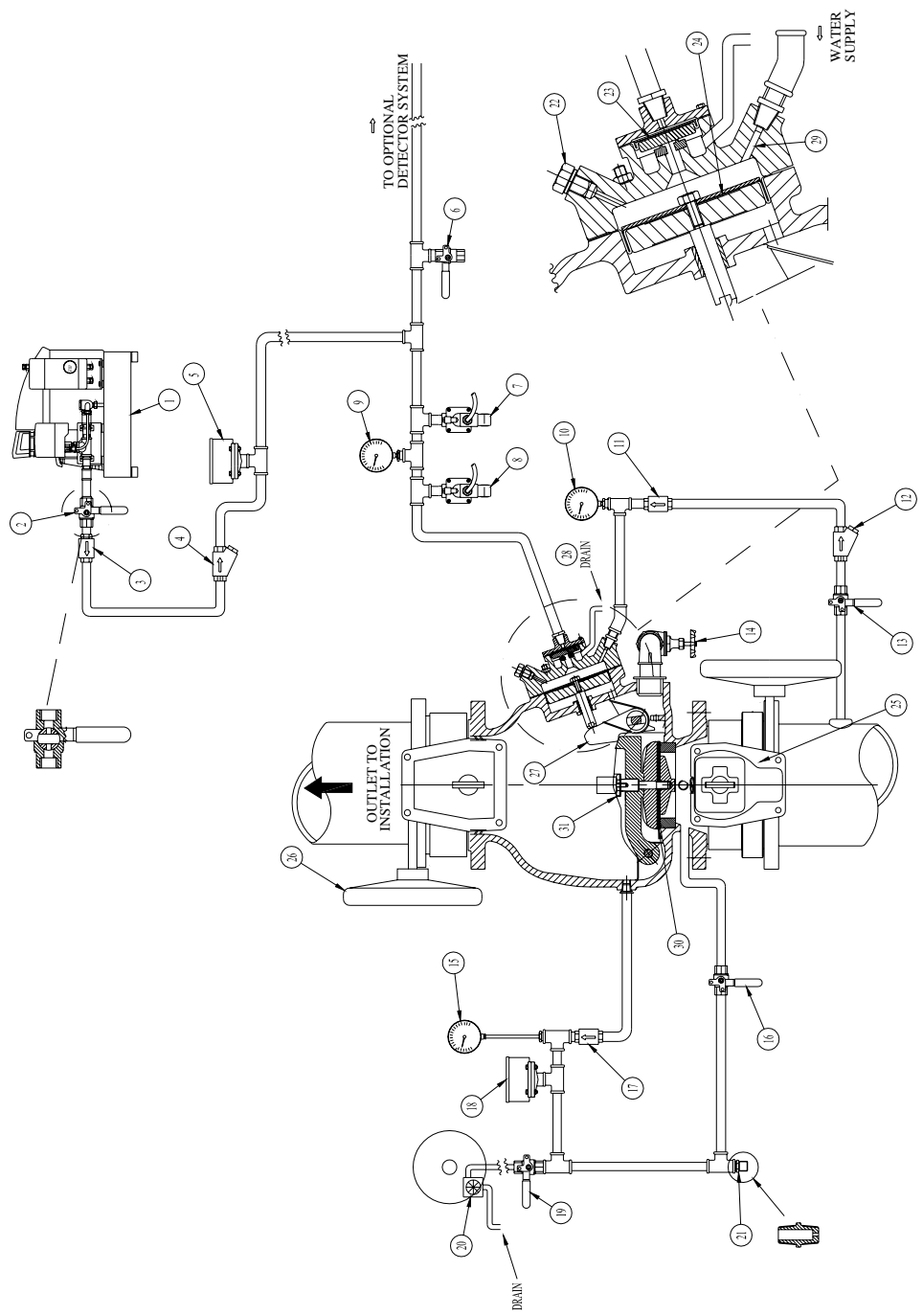
Data Sheet: Deluge Valve MK3 Pneumatic
General Description

Page: Page 2 of 3
Date: 15th June 2007

GW DELUGE VALVE STATION MK III CAST IRON PNEUMATIC (ELECTRIC) GENERAL DESCRIPTION



ITEM	DESCRIPTION	ITEM	DESCRIPTION
1	COMPRESSOR	23	PNEUMATIC DIAPHRAGM
2	BALL VALVE - 3mm RESTRICTED	24	HYDRAULIC DIAPHRAGM & PISTON
3	NON-RETURN VALVE	25	MAIN BUTTERFLY ISOLATION VALVE
4	FILTER	26	UPPER BUTTERFLY ISOLATION VALVE
5	PRESSURE SWITCH	27	LEVER / LATCH
6	BALL VALVE	28	WATER CHAMBER DRAIN
7	SOLENOID VALVE	29	RESTRICTED ORIFICE
8	SOLENOID VALVE	30	RUBBER CLACK SEAL
9	PRESSURE GAUGE - NO LOSS COUPLING	31	RUBBER SEAT INSERT (200mm ONLY)
1	PRESSURE GAUGE - NO LOSS COUPLING	*	Not supplied as part of Valve Station.
1	NON-RETURN VALVE		



The right is reserved to vary or modify any specifications without prior notice

GW SPRINKLER A/S

Kastanievej 15, DK 5620-Glamsbjerg, Denmark

TEL: +45 64722055 FAX: +45 64722255

Email: sales.dep@gwspinkler.com

Data sheet also available at www.gwspinkler.com

DATA SHEET No: GW DV025 1001 A

Data Sheet: Deluge Valve MK3 Pneumatic
General Description

Page: Page 3 of 3
Date: 15th June 2007